

# LOBO

advanced platform system

## Rock Salt Mining Application

Salt is usually mined as rock salt and extracted using drilling, pumping and mining equipment. This machinery must be kept functioning and safe and preserved from failure or decline. Therefore, this type of activity is usually planned and scheduled.

Corrective maintenance is defined as repairing equipment that no longer works correctly. This is an unscheduled, unplanned task, usually associated with greater hazards, higher risk levels and great inconvenience.

Machines and equipment are often difficult to access for maintenance and cleaning tasks.



SunHills Mining - Canada

Traditional scaffolding and aluminium tower systems could be used. Still, as they cannot be quickly or easily assembled and are not tailored to fit each application, they cannot be deployed from one machine to another. As a result, they do not meet the industry's day-to-day changing requirements.

Outsourced scaffolding labour is expensive and not available 24/7.

Aluminium frame systems are cumbersome, inflexible and will not adjust to fit into awkward areas. They take up much space when not in use

and cannot be easily transported around the facility. Regular access to elevated areas, for example, above conveyors, is awkward and challenging. Safety is critical to working at a height that cannot be compromised.

### The Solution

The LOBO System is a re-configurable work platform product that combines the flexibility and strength of traditional scaffolding with the simplicity and mobility of tower systems.

This combination provides a versatile access system with applications across the aggregate and mining industries.



Moreton Salt

[www.lobosystems.com](http://www.lobosystems.com)

Conformities

EU: BS EN1004-1:2020 & EU: BS EN1004-2:2021 ( BS 1139 )

USA: OSHA CFR 29 1926 450-454 & subpart L & codified under 29 CFR 1910.27(a).

Canada: CSA Z797-18 and 269.2 -M87

Australia: AS/NZS 1576.1:2010 and AS/NZS 1576.3:2015 Tower

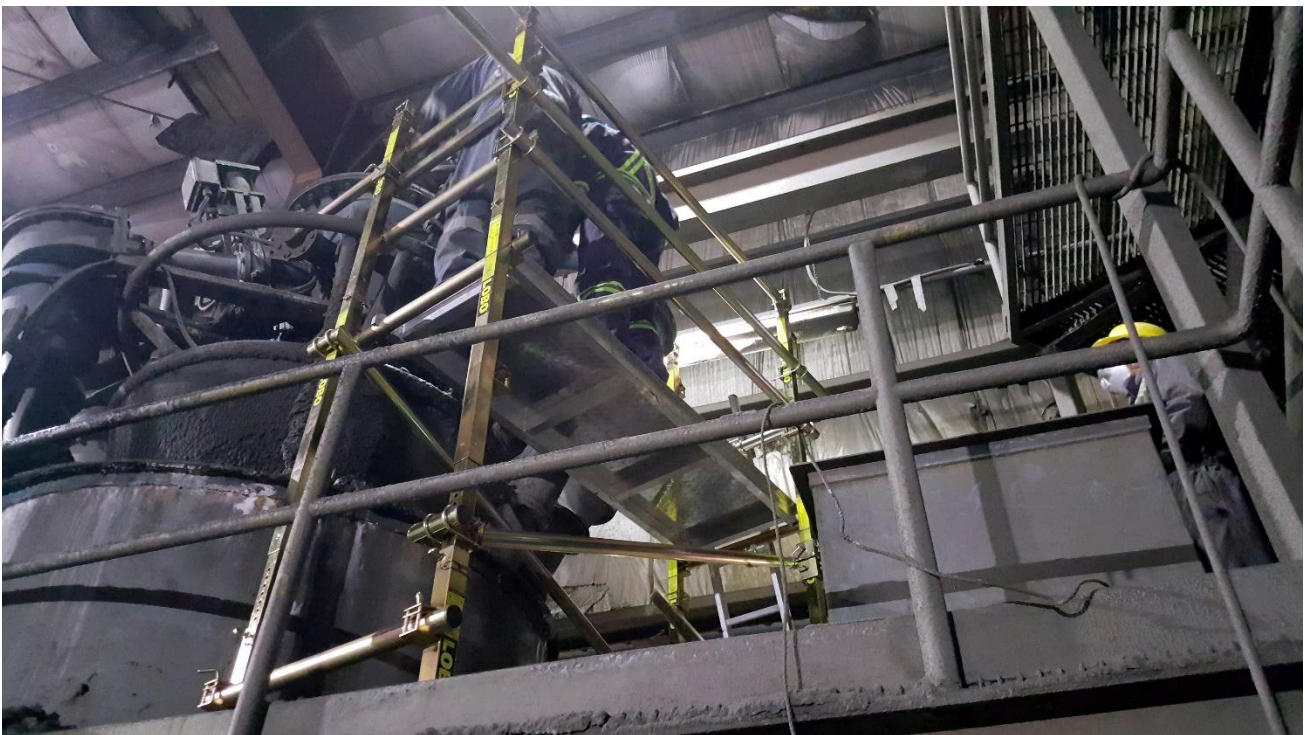
**ISO 9001 : 2015**  
CERTIFIED 213858

# LOBO

advanced platform system



The LOBO System, utilising its unique patented clamp, can be reconfigured and adjusted into any shape or size required without the need for tools. Anyone can assemble this simple system, as the components are modular. In addition, LOBO's electroplated steel legs and components can be flat packed when not in use and transported easily for storage or utilisation elsewhere.



The Mosaic Company - Canada

[www.lobosystems.com](http://www.lobosystems.com)

#### Conformities

EU: BS EN1004-1:2020 & EU: BS EN1004-2:2021 ( BS 1139 )

USA: OSHA CFR 29 1926 450-454 & subpart L & codified under 29 CFR 1910.27(a).

Canada: CSA Z797-18 and 269.2 -M87

Australia: AS/NZS 1576.1:2010 and AS/NZS 1576.3:2015 Tower

**ISO 9001 : 2015**  
CERTIFIED 213858

# LOBO

advanced platform system

Your in-house maintenance crews can assemble the LOBO System quickly, easily and safely around, under or above machinery or conveyors. To ensure safety, guardrails can be fitted in seconds, at any point in the system and at any stage of the assembly process. As a result, staff should never be exposed to the risk of a fall.

This means outsourced scaffolding labour costs can be reduced **without comprising safety**. Areas previously considered difficult to access can now be easily accessed for maintenance and cleaning purposes. In addition, as it is available 24/7, it puts you in control of what and when you schedule your maintenance tasks and is immediately available for those un-scheduled emergencies.

## **Why Choose LOBO?**

***Safe - Available 24/7 - Re-configurable - No-tools assembly – Simple To Use  
Solid and Durable - Reduces Labour Costs – Scalable.***

### **Product Benefits**

LOBO is scalable, adaptable and adjustable to meet your ongoing and changing requirements. Add more components or alter your existing configuration to satisfy the demands of the next task. Protect your initial investment with a product that will safely meet all your access needs. Toeboards and a lifting beam can also be added. It is a rigid and stable product which meets or exceeds current safety regulations.



### **LOBO Towerstore**

The Towerstore offers security on or off-site. In addition, it provides a secure yet simple way to store your LOBO components, simplifying managing all the components parts.

**Explicitly designed for LOBO's advanced work platform system, it is fitted with feet for an easy pallet truck or forklift manoeuvrability. Also, it can be locked with a padlock for security or storage. The Towerstore can be vertically or horizontally mounted to suit the workshop and can be transported for Cost Benefits.**

LOBO's electroplated steel structure ensures many years of product life and a system that will not shake or rattle. In addition, the modular approach means components are fully integrated and can be hand-carried. Entirely constructed systems can also be made mobile by the addition of wheels.

[www.lobosystems.com](http://www.lobosystems.com)

### Conformities

EU: BS EN1004-1:2020 & EU: BS EN1004-2:2021 ( BS 1139 )

USA: OSHA CFR 29 1926 450-454 & subpart L & codified under 29 CFR 1910.27(a).

Canada: CSA Z797-18 and 269.2 -M87

Australia: AS/NZS 1576.1:2010 and AS/NZS 1576.3:2015 Tower

**ISO 9001 : 2015**  
CERTIFIED 213858

# LOBO

advanced platform system

Experience shows that deploying the LOBO system reduces the costs of hiring scaffolding and constructing bespoke fixed access systems. By reducing your reliance on outsourced scaffolding and engineering companies, cost savings will be achieved – easily within a12 months.

With this quantifiable cost reduction comes the added savings associated with reduced downtime and greater productivity from your maintenance department.

Available 24/7, quick to erect, **and above all, safe.**



[www.lobosystems.com](http://www.lobosystems.com)

Conformities

EU: BS EN1004-1:2020 & EU: BS EN1004-2:2021 ( BS 1139 )

USA: OSHA CFR 29 1926 450-454 & subpart L & codified under 29 CFR 1910.27(a).

Canada: CSA Z797-18 and 269.2 -M87

Australia: AS/NZS 1576.1:2010 and AS/NZS 1576.3:2015 Tower

**ISO 9001 : 2015**  
CERTIFIED 213858