

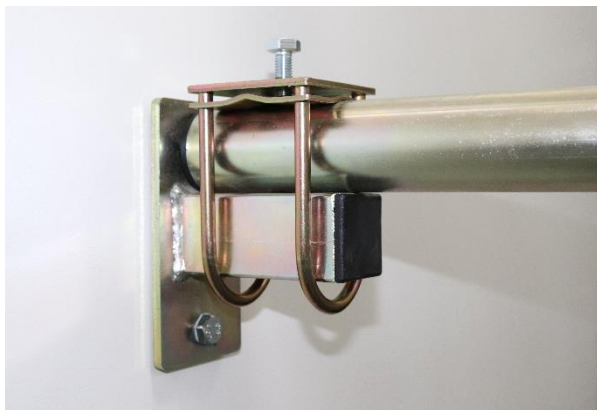
Application - Permanent Solution

Many customers use the LOBO System as a permanent fixed-to-the-floor system. Any sway or movement in the product can be effectively removed by using extra components at any stage.

In addition, the system can be made permanent by employing several methods:

Firstly, we recommend using Adjustable Base Plates, which allow the system to be anchored to the floor using conventional construction bolts.

These four holes allow the Base Plate to be permanently fixed into position. Secondly, the L-Bolts should be replaced with standard 10mm bolts, and once the system has been configured to exactly how it should remain, these bolts can then be tightened to a specific torque setting.



Using bolts and not L-Bolts produces a greatly enhanced joint grip which means the system is, in effect, permanent. Once assembled, using these techniques, the LOBO System is similar in strength and rigidity to a steel welded system.



www.lobosystems.com

Conformities

EU: BS EN1004-1:2020 & EU: BS EN1004-2:2021 (BS 1139)

USA: OSHA CFR 29 1926 450-454 & subpart L & codified under 29 CFR 1910.27(a).

Canada: CSA Z797-18 and 269.2 -M87

Australia: AS/NZS 1576.1:2010 and AS/NZS 1576.3:2015 Tower

ISO 9001 : 2015
CERTIFIED 213858