

Product Application – Portable Lifting Slider Beam



LOBO Systems provides easy-to-attach lifting slider beams in a range of lengths.

The beams are easily fitted to standard LOBO components or integrated into a LOBO System. This is all done without tools and can be flat-packed for transport or storage.



Quickly assembled, they can be used for many industrial applications to maintain pumps, gearboxes, motors, and other machines. LOBO beams can be positioned within a LOBO structure to facilitate limitless applications.



www.lobosystems.com

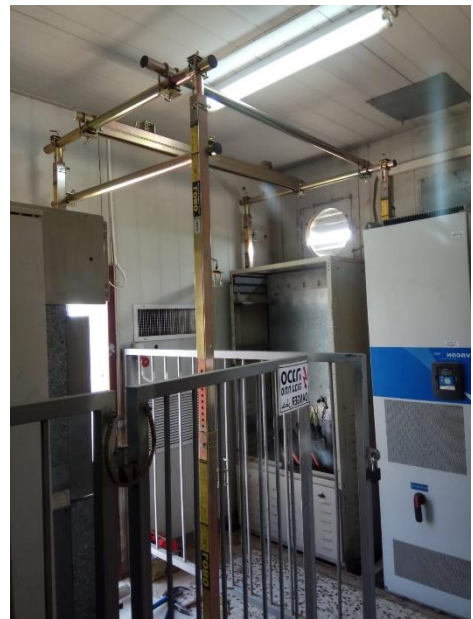
Conformities
 EU: BS EN1004-1:2020 & EU: BS EN1004-2:2021 (BS 1139)
 USA: OSHA CFR 29 1926 450-454 & subpart L & codified under 29 CFR 1910.27(a).
 Canada: CSA Z797-18 and 269.2 -M87
 Australia: AS/NZS 1576.1:2010 and AS/NZS 1576.3:2015 Tower

ISO 9001 : 2015
CERTIFIED 213858



Beams are rated and certified with a maximum Safe Working Load (SWL) of 500Kg/1100 lbs.

LOBO Slider Beams are designed to integrate with the LOBO System fully or can be configured freestanding.



Five lengths are available: 1.2m/4ft | 1.8m/6ft | 2.4m/8ft | 3.0m/10ft | 3.6m/12ft
All are rated at 500 kg/1100 lbs.

www.lobosystems.com

Conformities

EU: BS EN1004-1:2020 & EU: BS EN1004-2:2021 (BS 1139)

USA: OSHA CFR 29 1926 450-454 & subpart L & codified under 29 CFR 1910.27(a).

Canada: CSA Z797-18 and 269.2 -M87

Australia: AS/NZS 1576.1:2010 and AS/NZS 1576.3:2015 Tower

ISO 9001 : 2015
CERTIFIED 213858