

Application - Escalator Access System

Current aluminium scaffolding products cannot be reconfigured to fit awkward areas such as stairways and escalators. In addition, tube and clamp scaffolding is heavy and time-consuming to construct. The LOBO System can offer a

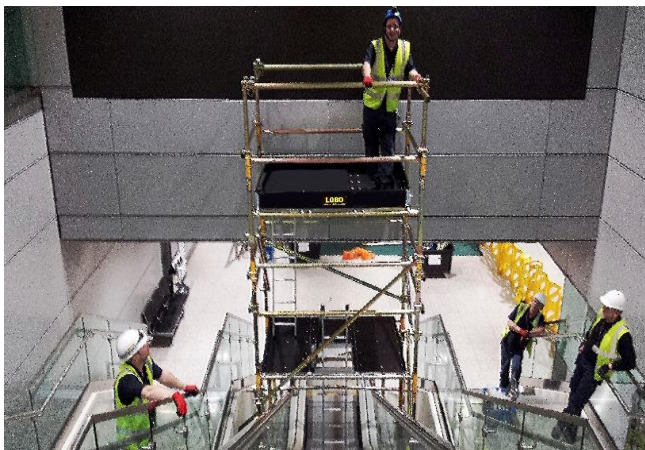


solution to these problems. Moreover, as it is fast to assemble, significant reductions in labour can be achieved.

Underground and other subway train systems comprise a vast network of inter-connected railway lines. Key to the efficient running, smooth operation and safety of travelling passengers is an adequately maintained escalator & stair system.

Real-time overnight maintenance issues exist as time constraints increase labour costs, with safety being a key component. The strategic use of the LOBO System to gain rapid access for working at height issues may partly alleviate these issues.

The LOBO System can be configured to create a safe working work platform above an escalator or staircase. The photos show the rapid assembly time of a 40-minute system coupled with the no tools to erect feature, which means a lower labour cost and a safer working environment.



The LOBO System can be configured into unlimited shapes and sizes to suit almost all awkward access situations and packs away for easy storage or transportation to the next work area. Although these photos were taken at Blackhorse Road Station, the system only took 45 minutes to assemble. The project took one overnight session to complete; previously it had taken three overnight sessions. The equipment & training costs were approximately £9000.

www.lobosystems.com

Conformities

EU: BS EN1004-1:2020 & EU: BS EN1004-2:2021 (BS 1139)

USA: OSHA CFR 29 1926 450-454 & subpart L & codified under 29 CFR 1910.27(a).

Canada: CSA Z797-18 and 269.2 -M87

Australia: AS/NZS 1576.1:2010 and AS/NZS 1576.3:2015 Tower

ISO 9001 : 2015
CERTIFIED 213858