

LOBO

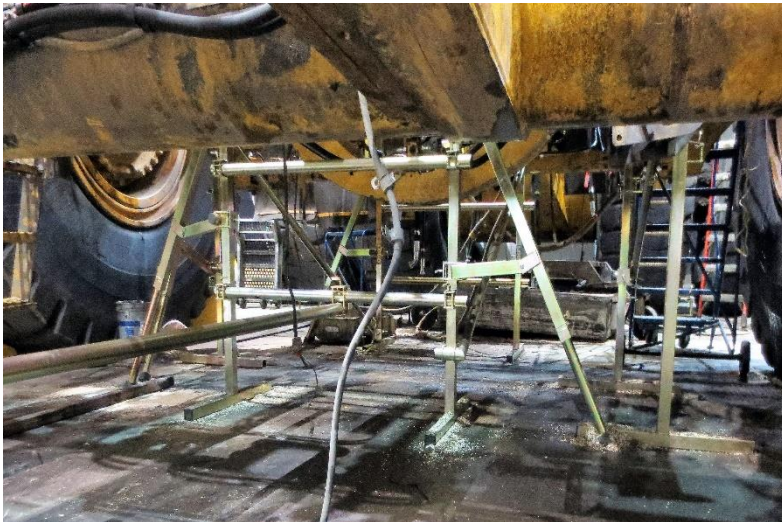
advanced platform system

Aggregates and Mining Application

Preventative maintenance can be defined as working on equipment, vehicles or machinery to keep all in a functioning and safe state and preserve it from failure or decline. This type of activity is usually planned and scheduled.

Corrective maintenance is defined as repairing equipment that no longer works correctly. This is an unscheduled, unplanned task, usually associated with greater hazards, higher risk levels and great inconvenience.

Machines and equipment are often difficult to access for maintenance and cleaning tasks.



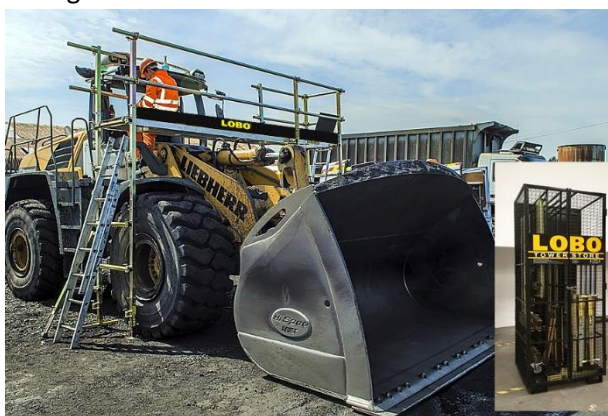
Traditional scaffolding and aluminium tower systems could be used, but as they cannot be quickly or easily assembled and are not tailored to fit each application, they cannot be deployed from one machine to another. They do not meet the industry's day-to-day changing requirements.

Outsourced scaffolding labour is expensive, and not available 24/7, aluminium frame systems are cumbersome, inflexible and will not adjust to fit into awkward areas.

When not in use, they take up a lot of space and cannot be easily transported around the facility. Regular access to elevated areas, for example above conveyors, is awkward and difficult to reach. Safety is a key component of working at a height that cannot be compromised.

The Solution

The LOBO System is a re-configurable work platform product that combines the flexibility and strength of traditional scaffolding with the simplicity and mobility of tower systems. This combination provides a versatile access system that has applications right across the aggregate and mining industries.



www.lobosystems.com

Conformities

EU: BS EN1004-1:2020 & EU: BS EN1004-2:2021 (BS 1139)

USA: OSHA CFR 29 1926 450-454 & subpart L & codified under 29 CFR 1910.27(a).

Canada: CSA Z797-18 and 269.2 -M87

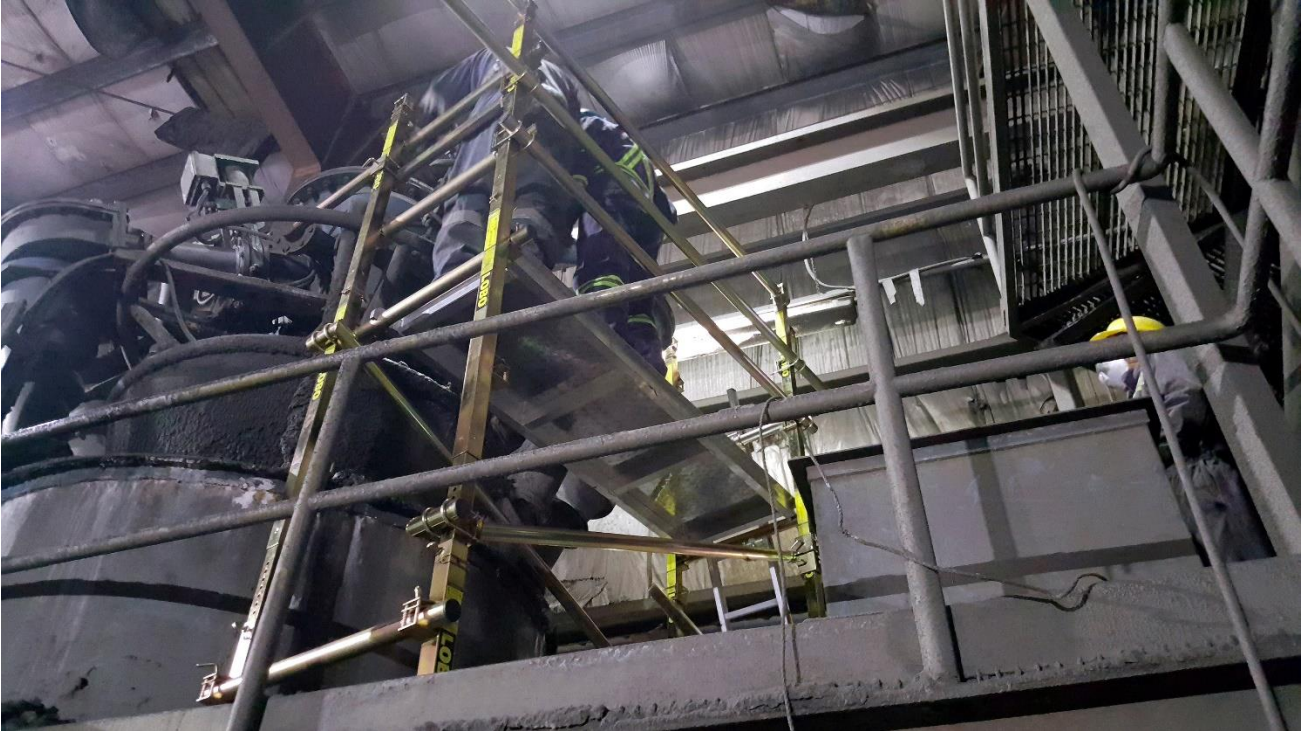
Australia: AS/NZS 1576.1:2010 and AS/NZS 1576.3:2015 Tower

ISO 9001 : 2015
CERTIFIED 213858

LOBO

advanced platform system

The LOBO System, utilising its unique patented clamp, can be reconfigured and adjusted into any shape or size required without the need for tools. This simple system can be assembled by anyone, as the components are modular. LOBO's electroplated steel legs and components can be flat packed when not in use and transported easily for storage or utilisation elsewhere.



Your in-house maintenance crews can assemble the LOBO System quickly, easily and safely around, under or above machinery or conveyors. To ensure safety, guardrails can be fitted in seconds, at any point in the system, and at any stage of the assembly process. Staff should never be exposed to the risk of a fall.

This means outsourced scaffolding labour costs can be reduced **without comprising safety**. Areas previously considered difficult to get to can now be accessed with ease for maintenance and cleaning purposes. As it is available 24/7, it puts you in control of what and when you schedule your maintenance tasks and is immediately available for those un-scheduled emergencies.

Product Benefits

LOBO is scalable, adaptable and adjustable to meet your ongoing and changing requirements. Add more components or alter your existing configuration to satisfy the demands of the next task. Protect your initial investment with a product that will safely meet all your access needs. Toeboards and a lifting beam can also be added. It is a rigid and stable product, which meets or exceeds current safety regulations.

www.lobosystems.com

Conformities

EU: BS EN1004-1:2020 & EU: BS EN1004-2:2021 (BS 1139)

USA: OSHA CFR 29 1926 450-454 & subpart L & codified under 29 CFR 1910.27(a).

Canada: CSA Z797-18 and 269.2 -M87

Australia: AS/NZS 1576.1:2010 and AS/NZS 1576.3:2015 Tower

ISO 9001 : 2015
CERTIFIED 213858

LOBO

advanced platform system

LOBO Towerstore

The Towerstore offers security on or off-site. It provides a secure and yet simple way to store your LOBO components, which also makes managing all the components parts that much simpler.



It is designed specifically for LOBO's advanced work platform system, so it is fitted with feet for easy pallet truck or forklift manoeuvrability. Also, it can be locked with a padlock for security or storage. The Towerstore can be vertically or horizontally mounted to suit the workshop and can be transported for rapid deployment, on and off-site.



Cost Benefits

LOBO's electroplated steel structure ensures many years of product life and a system that will not shake or rattle. The modular approach means components are fully integrated and can be hand-carried. Fully constructed systems can also be made mobile by the addition of wheels.

Experience shows that deploying the LOBO system reduces the costs associated with hiring scaffolding and constructing bespoke fixed access systems. By reducing your reliance on outsourced scaffolding and engineering companies, cost savings will be achieved – easily within 12 months.

With this quantifiable reduction in costs comes the added savings associated with reduced downtime and greater productivity from your maintenance department.

Available 24/7, quick to erect, and above all, safe.

www.lobosystems.com

Conformities

EU: BS EN1004-1:2020 & EU: BS EN1004-2:2021 (BS 1139)

USA: OSHA CFR 29 1926 450-454 & subpart L & codified under 29 CFR 1910.27(a).

Canada: CSA Z797-18 and 269.2 -M87

Australia: AS/NZS 1576.1:2010 and AS/NZS 1576.3:2015 Tower

ISO 9001 : 2015
CERTIFIED 213858