

Veolia Water Technologies Case Study

The Problem:

Veolia Water Technologies have more than 100 years' experience in delivering water treatment service and solutions. Engineers, knowledgeable and trained on a wide range of water treatment systems support service packages, have created a range of flexible lifecycle support options to ensure they deliver lifetime support and deliver to their customers the peace of mind that comes from having a reliable service.

Scaffolding services to Veolia Water Technologies are provided by outsourced companies. Reducing waste is a key goal for any business, often it's simply by using a quicker and safer system and optimising the maintenance process.

The managers at Veolia realise that costs must be reduced to ensure the overall plant viability, but safety cannot be compromised, and aluminium is not preferred on the plant.

The Solution



U Shape



Toe boards added before use.

www.lobosystems.com

Conformities

EU: BS EN1004:2004 BS 1139 parts 3 & 4, **CE**
USA: OSHA Compliant, ANSI A10.8, 29 CFR Part 1920 (General Industry)
Canada: CAN/CSA Z797-09
Australia: AS/NZS 1576.1:2010 and AS/NZS 1576.3:2015 Tower.



The Solution

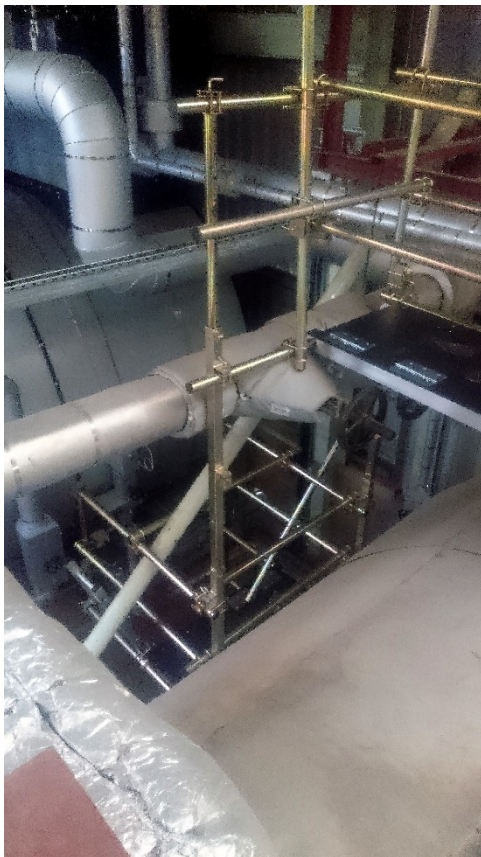
LOBO Systems' safe and secure platform product. The unique and patented clamp allows the system to be quickly assembled without the use of tools into any size or shape. Maintenance engineers can assemble, perform the task and dismantle the LOBO System before traditional scaffolding can be erected.

The Benefits:

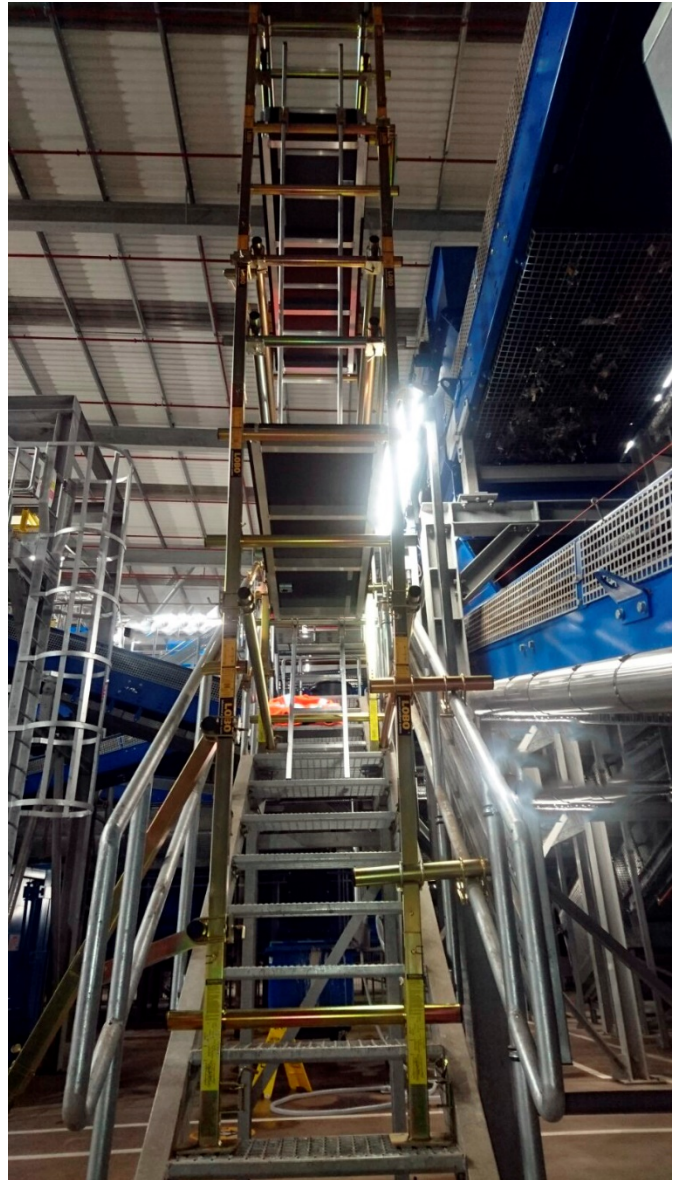
Veolia managers expect to save significant costs by using the innovative LOBO product. This is because they do not have to rely on outsourced scaffolding companies, as their own maintenance personnel can assemble the LOBO System.

The unique versatility of the LOBO System brings labour cost reduction, enhanced efficiency & performance.

The LOBO System creates a safe working environment, which increases productivity and maximizes the return on investment.



Toe boards fitted before use



www.lobosystems.com

Conformities

EU: BS EN1004:2004 BS 1139 parts 3 & 4, **CE**
USA: OSHA Compliant, ANSI A10.8, 29 CFR Part 1920 (General Industry)
Canada: CAN/CSA Z797-09
Australia: AS/NZS 1576.1:2010 and AS/NZS 1576.3:2015 Tower.

