

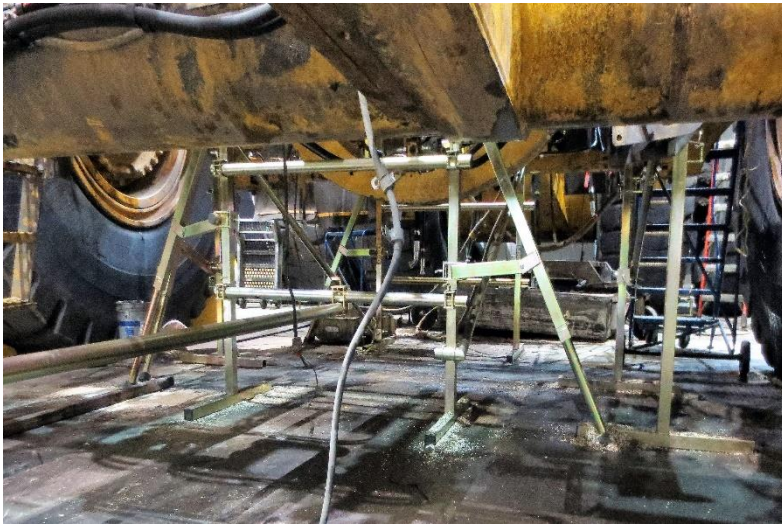
Rock Salt Mining Application

Salt is usually mined in the form of rock salt and extracted using drilling, pumping and mining equipment.

This machinery is required to be kept in a functioning and safe state and preserved from failure or decline. This type of activity is usually planned and scheduled.

Corrective maintenance is defined as repairing equipment that no longer works correctly. This is an unscheduled, unplanned task, usually associated with greater hazards, higher risk levels and great inconvenience.

Machines and equipment are often difficult to access for maintenance and cleaning tasks.



Traditional scaffolding and aluminium tower systems could be used, but as they cannot be quickly or easily assembled and are not tailored to fit each application, they cannot be deployed from one machine to another. They do not meet the industry's day to day changing requirements.

Outsourced scaffolding labour is expensive and not available 24/7, aluminium frame systems are cumbersome, inflexible and will not adjust to fit into awkward areas.

SunHills Mining - Canada

When not in use, they take up a lot of space and cannot be easily transported around the facility. Regular access to elevated areas, for example above conveyors, is awkward and difficult to reach. Safety is a key component of working at height that cannot be compromised.

The Solution

The LOBO System is a re-configurable work platform product that combines the flexibility and strength of traditional scaffolding with the simplicity and mobility of tower systems.

This combination provides a versatile access system that has applications right across the aggregate and mining industries.



Moreton Salt

www.lobosystems.com

Conformities

EU: BS EN1004:2004 BS 1139 parts 3 & 4,

USA: Complies to OSHA CFR 29 1926 450-454 & sub part L & codified under 29 CFR 1910.27(a).

Canada: CSA Z797-09 and 269.2 (M87 and -16)

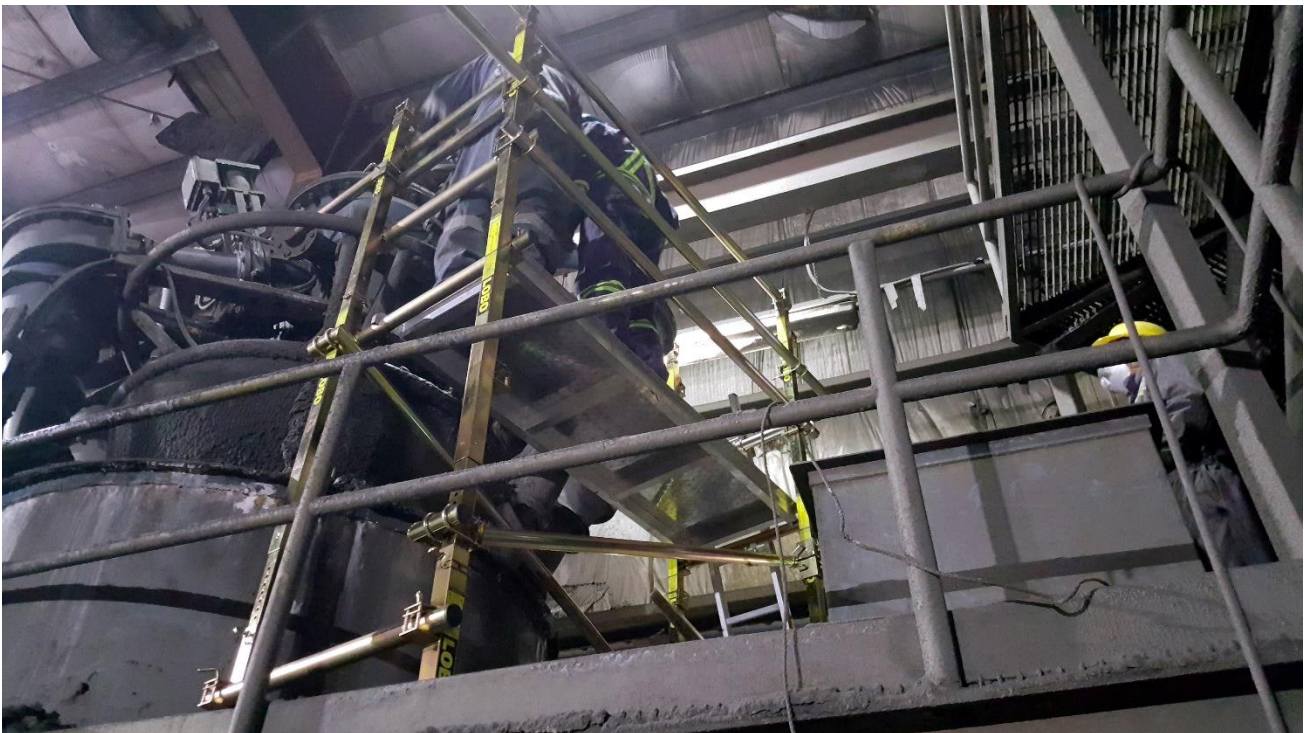
Australia: AS/NZS 1576.1:2010 and AS/NZS 1576.3:2015 Tower

LOBO

advanced platform system



The LOBO System, utilising its unique patented clamp, can be reconfigured and adjusted, without the need for tools, into any shape or size required. This simple system can be assembled by anyone, as the components are modular. LOBO's electroplated steel legs and components can be flat packed when not in use and transported easily, for storage or utilisation elsewhere.



The Mosaic Company - Canada

www.lobosystems.com

Conformities

EU: BS EN1004:2004 BS 1139 parts 3 & 4,

USA: Complies to OSHA CFR 29 1926 450-454 & sub part L & codified under 29 CFR 1910.27(a).

Canada: CSA Z797-09 and 269.2 (M87 and -16)

Australia: AS/NZS 1576.1:2010 and AS/NZS 1576.3:2015 Tower



LOBO

advanced platform system

Your in-house maintenance crews can assemble the LOBO System quickly, easily and safely around, under or above machinery or conveyors. To ensure safety, guardrails can be fitted in seconds, at any point in the system, and at any stage of the assembly process. Staff should never be exposed to the risk of a fall.

This means out-sourced scaffolding labour costs can be reduced **without comprising safety**. Areas, previously considered difficult to get to, can now be accessed with ease for maintenance and cleaning purposes. As it is available 24/7 it puts you in control of what and when you schedule your maintenance tasks and is immediately available for those un-scheduled emergencies.

Why Choose LOBO?

***Safe - Available 24/7 - Re-configurable - No-tools assembly – Simple To Use
Strong and Durable - Reduces Labour Cost – Scalable.***

Product Benefits

LOBO is scalable, adaptable and adjustable to meet your ongoing and changing requirements. Simply add more components or alter your existing configuration to satisfy the demands of the next task. Protect your initial investment with a product that will meet all your access needs safely. Toeboards and a lifting beam can also be added. It is a rigid and stable product, which meets or exceeds current safety regulations.



LOBO Towerstore

The Towerstore offers security on or off-site. It provides a secure and yet simple way to store your LOBO components, which also makes managing all the components parts that much simpler.

Designed specifically for LOBO's advanced work platform system, it is fitted with feet for easy pallet truck or forklift manoeuvrability. Also, it can be locked with a padlock for security or storage. The Towerstore can be vertically or horizontally mounted to suit the workshop and can be transported for Cost Benefits

LOBO's electroplated steel structure ensures many years of product life and a system that will not shake or rattle. The modular approach means components are fully integrated and can be hand-carried. Fully constructed systems can also be made mobile by the addition of wheels.

www.lobosystems.com

Conformities

EU: BS EN1004:2004 BS 1139 parts 3 & 4,

USA: Complies to OSHA CFR 29 1926 450-454 & sub part L & codified under 29 CFR 1910.27(a).

Canada: CSA Z797-09 and 269.2 (M87 and -16)

Australia: AS/NZS 1576.1:2010 and AS/NZS 1576.3:2015 Tower



LOBO

advanced platform system

Experience shows that deploying the LOBO system reduces the costs associated with hiring scaffolding and constructing bespoke fixed access systems. By reducing your reliance on out-sourced scaffolding and engineering companies, cost savings will be achieved – easily within a 12-month period.

With this quantifiable reduction in costs comes the added savings associated with reduced down-time and greater productivity from your maintenance department.

Available 24/7, quick to erect, **and above all safe.**



www.lobosystems.com

Conformities

EU: BS EN1004:2004 BS 1139 parts 3 & 4,

USA: Complies to OSHA CFR 29 1926 450-454 & sub part L & codified under 29 CFR 1910.27(a).

Canada: CSA Z797-09 and 269.2 (M87 and -16)

Australia: AS/NZS 1576.1:2010 and AS/NZS 1576.3:2015 Tower

