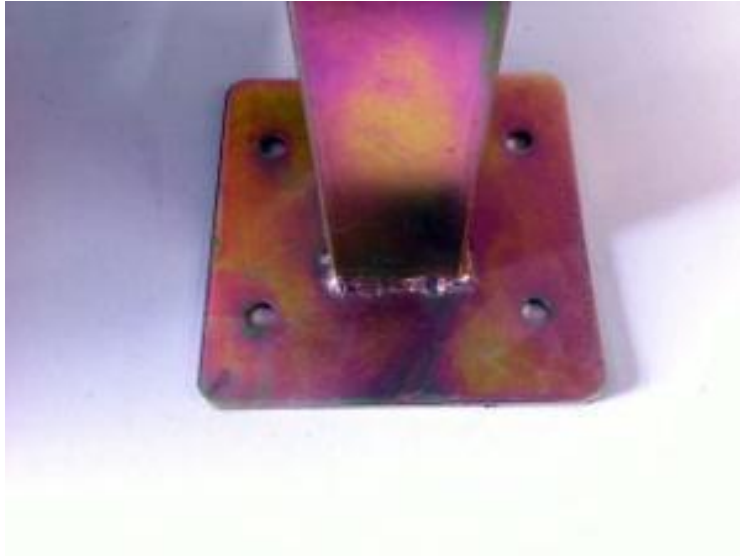


## Application - Permanent Solution

Many customers use the LOBO System as a permanently fixed to the floor system.



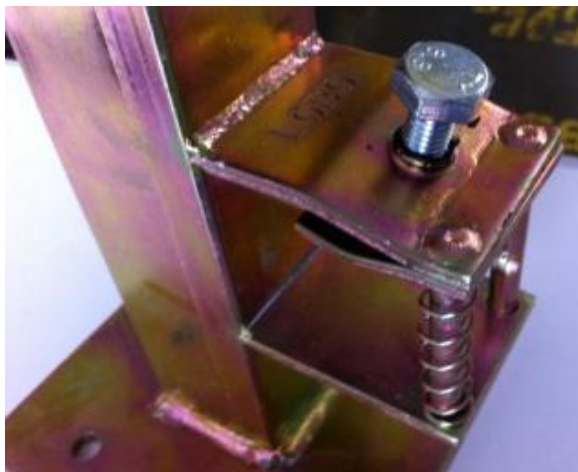
Any sway or movement in the product can be effectively removed by using extra components at any stage. The system can be made permanent by employing several methods:

Firstly, we recommend the use of Base Plates, which allow the system to be anchored to the floor using conventional construction bolts.

These four holes allow for the

Base Plate to be permanently fixed into position.

Secondly, the L-Bolts should be replaced with standard 10mm bolts and once the system has been configured to exactly how it should remain, these bolts can then be tightened to a specific torque setting.



The action of using bolts and not L-Bolts produces a greatly enhanced joint grip which means the system is, in effect, permanent.

Once assembled, using these techniques, the LOBO System is similar in strength and rigidity to a steel welded system.

[www.lobosystems.com](http://www.lobosystems.com)

### Conformities

EU: BS EN1004:2004 BS 1139 parts 3 & 4,

USA: Complies to OSHA CFR 29 1926 450-454 & sub part L & codified under 29 CFR 1910.27(a).

Canada: CSA Z797-09 and 269.2 (M87 and -16)

Australia: AS/NZS 1576.1:2010 and AS/NZS 1576.3:2015 Tower

**Examples of permanent LOBO Systems.**

These images are taken, before swapping out the L-Bolts with regular Bolts.



[www.lobosystems.com](http://www.lobosystems.com)

**Conformities**

EU: BS EN1004:2004 BS 1139 parts 3 & 4,

USA: Complies to OSHA CFR 29 1926 450-454 & sub part L & codified under 29 CFR 1910.27(a).

Canada: CSA Z797-09 and 269.2 (M87 and -16)

Australia: AS/NZS 1576.1:2010 and AS/NZS 1576.3:2015 Tower