

Case Study - Pemberton Leisure Homes Ltd

Pemberton Leisure manufacture premium leisure homes and lodges. By engaging in a strategic approach to safety and production, increases in output and a safe working environment have been achieved for the labour force.

Production and safety management begins with an organisation ensuring that employees have fit for purpose, work at height safety equipment, on which they have been trained to assemble, inspect and use safely.

Wood or aluminium based access equipment, which is unstable, does not adjust or is rickety and does not fit properly, is dangerous and should never be used.



The LOBO Advanced Platform provides the ultimate solution.

The LOBO System is a versatile work platform product that combines the flexibility and strength of traditional scaffolding with the simplicity and mobility of tower systems. The unique and patented hand-adjustable clamp, when combined with the tube, allows the technician to create a work platform, of any shape or size, without the need for any tools.

The system is made from modular steel components, which are easy and quick to assemble and provide a rock steady and safe working platform.

It flat packs for easy transportation and yet is incredibly rigid and strong.



Areas previously awkward to get to can now be accessed by your employees or contractors with ease, whenever required.

www.lobosystems.com

Conformities

EU: BS EN1004:2004 BS 1139 parts 3 & 4,

USA: Complies to OSHA CFR 29 1926 450-454 & sub part L & codified under 29 CFR 1910.27(a).

Canada: CSA Z797-09 and 269.2 (M87 and -16)

Australia: AS/NZS 1576.1:2010 and AS/NZS 1576.3:2015 Tower

The LOBO System comprises of trestle legs that vary in size and adjustable extensions with fixed side clamps. The position of the fixed side clamps is pre-determined to remove any risk associated with building traditional scaffolding.

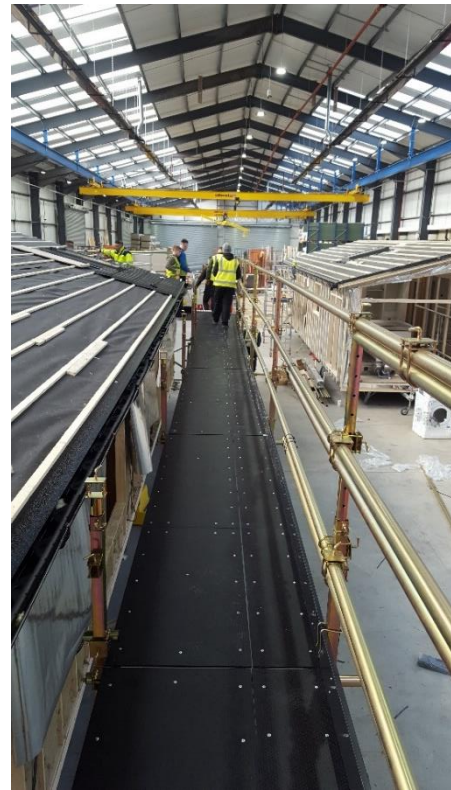
Steel tubes are passed through the clamps, which are then hand tightened to form a structure to suit the application. Sway braces, toe boards, wheels, guardrails



and outriggers can be added to enhance the construction.

The LOBO lifting slider beam can easily be incorporated to allow safe lifting of up to 500Kg loads.

The LOBO System is scalable, adaptable and adjustable to meet your ongoing and changing requirements. Simply add more components or alter your existing configuration to satisfy the demands of the next task.



Protect your initial investment with a product that will meet all your access needs safely!



The LOBO System can be conveniently stored and transported in a LOBO Towerstore storage crate. Available in three sizes, the Towerstore is built to protect your investment when not in use.

When needed, the components can be built with ease into any required configuration, by your maintenance engineers and technicians.

LOBO is a rigid and stable product, which meets or exceeds international safety regulations.

LOBO Systems provides fully certified training for safe assembly, inspection and use.

www.lobosystems.com

Conformities

EU: BS EN1004:2004 BS 1139 parts 3 & 4,

USA: Complies to OSHA CFR 29 1926 450-454 & sub part L & codified under 29 CFR 1910.27(a).

Canada: CSA Z797-09 and 269.2 (M87 and -16)

Australia: AS/NZS 1576.1:2010 and AS/NZS 1576.3:2015 Tower