

Case Study Nestle Canada.

The LOBO System is a re-configurable work platform product that combines the flexibility and strength of traditional scaffolding with the simplicity and mobility of tower systems.

This combination provides a versatile access system that has applications right across Maintenance, Cleaning and Process Industries.

Key Problems

Maintenance:

Food processing machines are often difficult to access for maintenance or cleaning tasks.

Traditional scaffolding or aluminium tower systems could be used, but as they cannot be quickly or easily assembled, they cannot be deployed from one machine to another. For this reason, they do not meet the industry's changing requirements.

Outsourced scaffolding labour is expensive and not available 24 x 7, aluminium frame systems are

cumbersome, inflexible, and will not adjust to fit into awkward areas. When not in use, they take up a lot of space and cannot be easily transported around the production areas. Regular access to elevated areas for example, above conveyors is awkward and difficult to reach.



www.Lobosystems.com

Conformities

EU: BS EN1004:2004 BS 1139 parts 3 & 4,
USA: Complies to OSHA CFR 29 1926 450-454 & sub part L & codified
Canada: CSA Z797-09 and 269.2 (M87 and -16)
Australia: AS/NZS 1576.1:2010 and AS/NZS 1576.3:2015 Tower



under 29 CFR 1910.27(a).



LOBO

advanced platform system

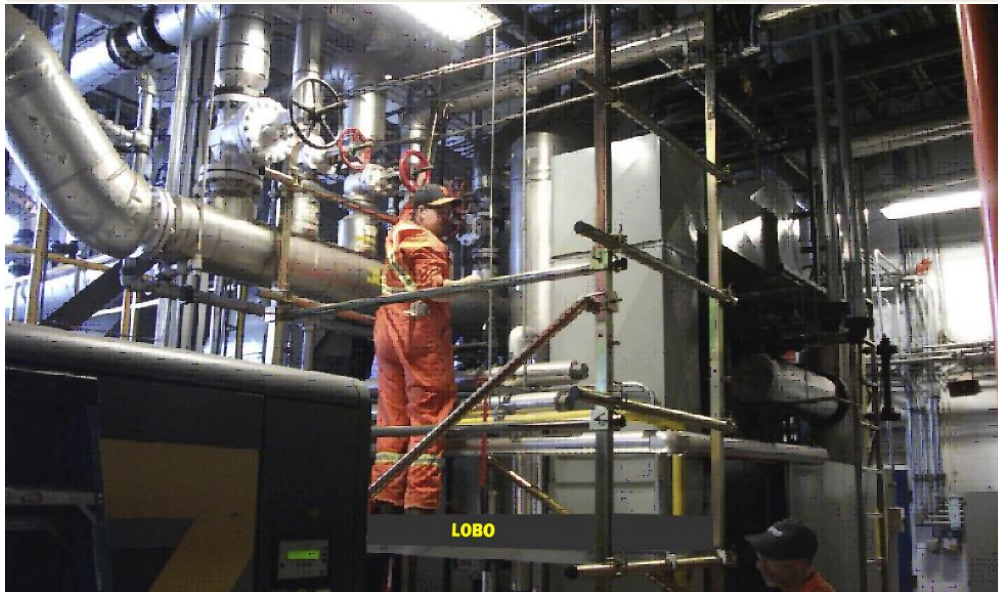
The Solution

The LOBO System, utilising its unique patented clamp, can be reconfigured and adjusted, without the need for tools, into any shape or size required. This simple system can be assembled by anyone, as the components are modular. LOBO's steel legs and components can be flat packed when not in use and transported easily for storage or utilisation elsewhere.

Your in-house maintenance crews can assemble the LOBO System quickly, easily and safely around, under or above machinery or conveyors. This means out-sourced scaffolding labour costs can be reduced without comprising safety. Areas, previously considered difficult to get to, can now be accessed with ease for maintenance and cleaning purposes. In addition, it is available 24/7 and so puts you in control of what and when you schedule your maintenance tasks.

Product Benefits

a) LOBO is scalable, adaptable and adjustable to meet your ongoing and changing requirements. Simply add more components or alter your existing configuration to satisfy the demands of the next task. Protect your initial investment with a product that will meet all your access needs safely.



b) LOBO is a rigid and stable product, which meets or exceeds current safety regulations. Guardrails can be fitted in seconds, at any point in the erection process.

c) LOBO's steel structure ensures many years of product life cycle and a system that will not shake or rattle. The system also includes anti-sway braces and outriggers for total rigidity on taller systems.

www.Lobosystems.com

Conformities

EU: BS EN1004:2004 BS 1139 parts 3 & 4,
USA: Complies to OSHA CFR 29 1926 450-454 & sub part L & codified
Canada: CSA Z797-09 and 269.2 (M87 and -16)
Australia: AS/NZS 1576.1:2010 and AS/NZS 1576.3:2015 Tower



under 29 CFR 1910.27(a).





d) LOBO’s modular approach means components fully integrate and can be hand-carried.
Fully constructed systems can also be made mobile by the addition of wheels.

Cost Benefits

Experience shows that deploying the LOBO system reduces the costs associated with hiring scaffolding and constructing bespoke access systems. By reducing your reliance on outsourced scaffolding and engineering companies cost savings will be achieved – easily in 12 months!

With this quantifiable reduction in costs comes the added savings associated with reduced downtime and greater productivity from your maintenance department!

Available 24/7, quick to erect – and above all Safe! – it is immediately adjustable for your next job with no staff waiting time while new fixed-frame structures are built.



Re-configurable, again and again, this product comes with no disposal costs and minimal replacement and ongoing training costs.

www.Lobosystems.com

Conformities

EU: BS EN1004:2004 BS 1139 parts 3 & 4,
USA: Complies to OSHA CFR 29 1926 450-454 & sub part L & codified
Canada: CSA Z797-09 and 269.2 (M87 and -16)
Australia: AS/NZS 1576.1:2010 and AS/NZS 1576.3:2015 Tower

CE under 29 CFR 1910.27(a).

